

Language Partner 2000

Software for adding Chinese, Japanese, Korean, etc. to Windows

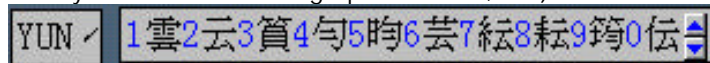
Martin Woesler, ed., *Language Partner 2000. CD*, Bochum: University Press Bochum 2000, 3-934453-04-X, USD 199.00; DM 399,00; EUR 204,01 [incl. 1 manual 128 pp., 3-934453-01-5]

Sponsored by the State Ministry of Science of Northrhine-Westfalia, Germany. Developed at the Institute of Foreign Language Learning, Bochum University.



Main features

Includes Unionway AsianSuite 2000 with Chinese, Japanese, Korean, Wenlin 2.2 light, additional languages and font features. For Windows 95, 98, NT 4.0, and Windows 2000. For Internet, email, Word etc. Supports Unicode, GB, Big5, EUC, JIS, S-JIS, KSC, etc. Includes several input methods (English-Chinese, English-Japanese or Pinyin - as shown in the graphic below -, etc.).



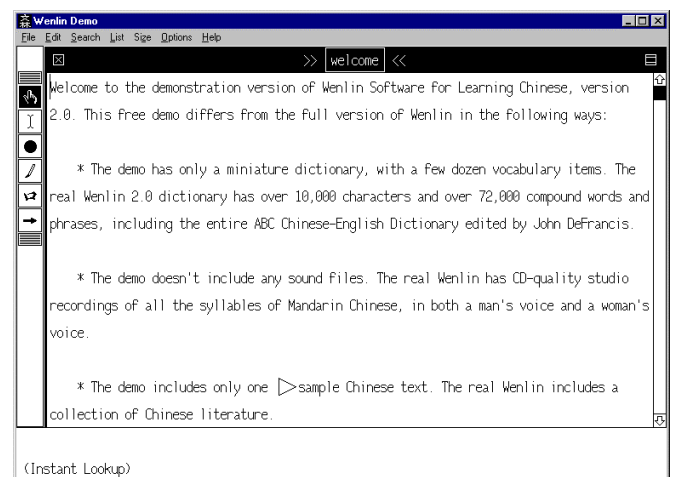
System Requirements

100% IBM compatible 386 or higher PC ; runs on any version of Windows 95/98/NT or Windows 2000; needs a minimum of 4MB RAM, 8MB or more are recommended, runs on VGA or higher monitor; needs at least 6 MB of hard drive free space (larger space is required for installing additional CJK true type fonts)

Additional features

- It is a true 32 bit software for Windows 95/98, Windows NT and Windows 2000.
- It contains Chinese online dictionaries like *Wenlin* in a light version.
- It contains Asian (Chinese, Japanese, and Korean or "CJK") modules like Unionway AsianSuite. It supports simultaneously native code pages and Unicode: Chinese (Big5, GB and HZ Code), Japanese (Shift-JIS, JIS and EUC Code), Korean (KSC code).
- It supports thousands of English applications including Microsoft Office, Publisher and WinFaxPro.
- Fully supports Internet and E-mail applications including Netscape Navigator, Messenger and Microsoft Internet Explorer and Outlook.
- Supports CJK characters in PageMaker, PhotoShop and CorelDraw, Fit Text to Path and other similar functions.
- Has a fast CJK text display mode.
- Its Chinese input method engine supports ZhuYin, PinYin, English-Chinese, CangJie, Cantonese, Simple-Stroke, Internal Code, Symbol and user defined Chinese input methods (IME).
- Comes with high quality Roma-Kanji and Kana-Kanji input methods (Japanese FEP).
- It has advanced Hangul and Hanja Korean input methods.
- Uses double byte edit controls to handle CJK character wrap functions. It is possible to change the edit control's default font.
- Supports all the Windows display cards such as VGA, Super VGA, XGA, etc., and also supports all the Windows printer drivers like Ink Jet, Laser, PostScript, etc.
- It provides high quality CJK true type fonts and CJK true type vertical fonts, optionally more than 100 TT fonts.
- It dynamically adjusts width of space character for Chinese and Japanese fonts.
- It provides the conversion of CJK true type fonts to single byte true type fonts.
- It supports the Mapping of English fonts to DBCS fonts.
- It supports the multilingual environment (incl. Unicode) of Windows.

Includes *Wenlin light* for learning Chinese



Europe: Bochumer Universitätsverlag GmbH, Universitätsstr. 140, 44799 Bochum, Tel. +49 (0) 234 971978-0, Fax 971978-6, email bou@bou.de

US: University Press Bochum, private ltd. co., c/o Ms Lei Song, 2504 Grant Ave #2, Redondo Beach CA 90278, USA, order fax: +1 209 729-5412, phone/fax: +1 310 379-9031, email usa@bou.de